

COMPETITION ENTRY FORM

Inspire your pupils to get creative by designing artwork for a Recycling Bin for your school.

The winning entry will win their design emblazoned on a recycling bin for your school and a workshop for their whole class with **Casting Innovations**. www.castinginnovations.com

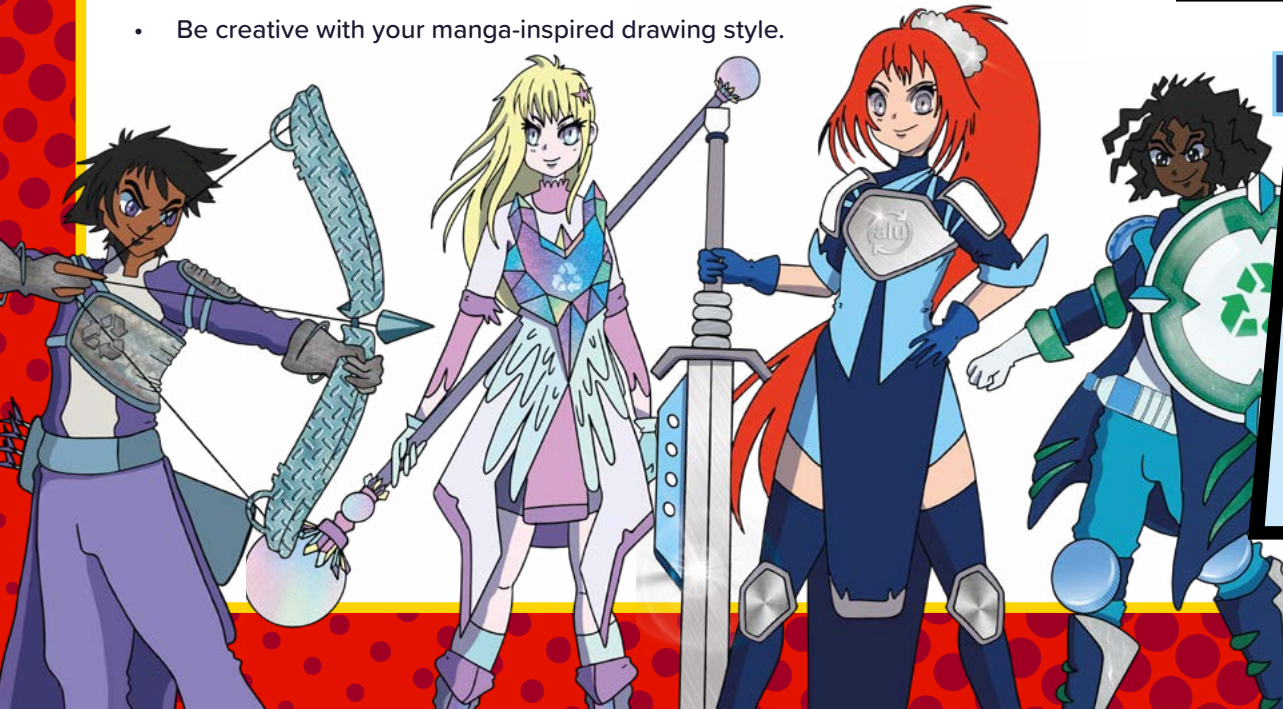
With the class watching on, the Casting Innovations team will melt down used drink cans collected by pupils and cast them into moulds made by the pupils earlier in the workshop.

Each pupil will take home a recycled keyring as a memento of the day and to remind them about the importance of recycling, sustainability and the infinite circularity of aluminium packaging.



SUCCESS CRITERIA

- Using the template supplied, encourage pupils to create a recycling message to encourage the use of the recycling bin, and also what can and can't be recycled.
- The design could also include a general recycling and environmental message.
- Be creative with your manga-inspired drawing style.



YOUR DETAILS

Pupil name: Age:

School name:

School address & postcode:

School telephone:

Teacher/parent/guardian name:

Teacher email address:

ENTRY DEADLINE AND DETAILS

For the chance to win, complete the competition entry form and the Bin Panels overleaf. Then scan or take a high-quality photograph of both sides of the form and email them to:

info@alupro.org.uk or post your entry to:
Alupro Masters of Infinity Competition,
Alupro, 1 Brockhill Court, Brockhill Lane, Redditch B97 6RB

All entries must reach us by **Friday 12th June 2024**

See full T&Cs

learningaluminium.co.uk/downloads/masters-of-infinity/uk/



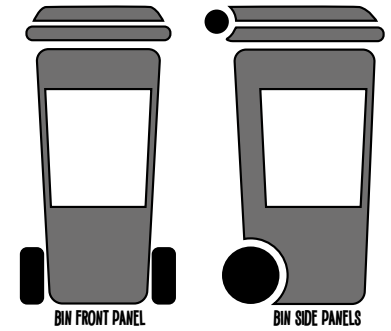
REMEMBER - you can get inspiration for your design from the Masters Of Infinity Video!

GET CREATIVE!

Using the template shown, create your recycling message.

Remember you **MUST** include a drink can, food tin, glass bottle or a plastic bottle. Your design can be hand drawn or created digitally.

The winning pupil will win their design emblazoned on a recycling bin for their school and a workshop for their whole class with Casting Innovations.



A large rectangular area defined by a dotted border, divided into three vertical sections for designing the recycling bin panels.

BIN LEFT-HAND PANEL

BIN FRONT PANEL

BIN RIGHT-HAND PANEL